

Two silver, cylindrical split set friction bolts are shown at an angle, one in front of the other, highlighting their tapered ends and split design.

SPLIT SET FRICTION BOLT

Daman Pipe is manufacturer and exporter of Split Set / Friction Bolt along with Combi Washer / Domed Bearing Plate required for underground mining and civil engineering projects.

Split Sets / Friction Bolts have been used as a primary roof support in the underground mining environment for many years. The Split Set consists of an open seam high tensile steel tube. One end is tapered for easy insertion into a pre-drilled hole. It is installed by driving the assembly into a marginally smaller hole than the split sets diameter. The welded steel ring provides the necessary support to hold the washer plate in place. The split set uses friction to anchor itself along the whole length of the bolt by relying on the radial spring force generated through compression of the tube. Split set technology is used worldwide by many mines for an extensive variety of mining applications.



Key Advantages of using

Split Sets

- **Fast and easy installation**
- **Full length support**
- **Effective support at any angle**
- **Axial and radial support**
- **No torquing or re-torquing**
- **No special equipment is required**
- **Improved rock stability**

SPLIT SET FRICTION BOLT

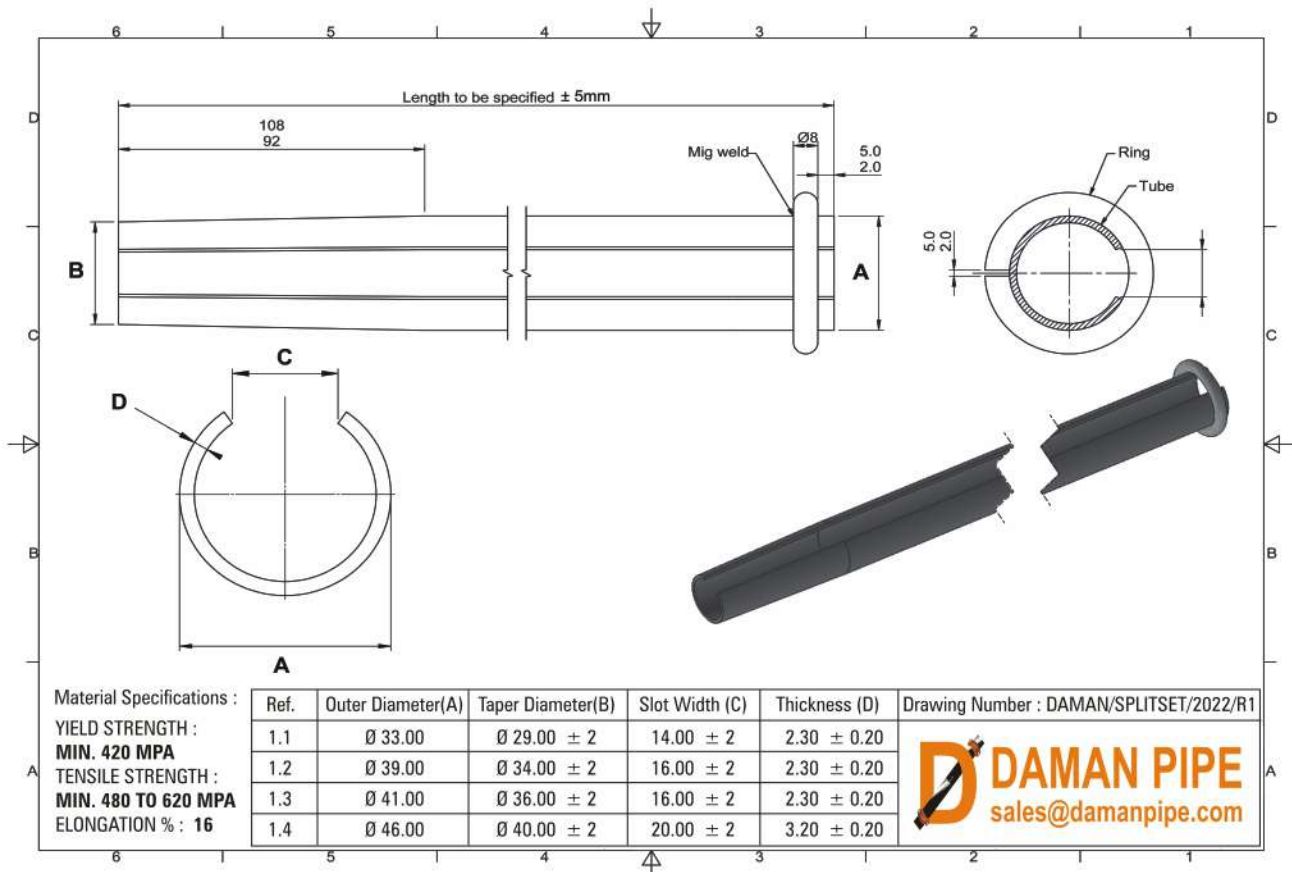
SIZES AVAILABLE

Split Set / Friction Bolts are available in 33mm, 39mm, 41mm and 46mm diameters in a variety of lengths to suit the application of the mine. The domed bearing washer plates are available in sizes 125 x 125 x 4mm and 150 x 150 x 4mm as well as the Combi Washer Plates are available in 300 x 285 x 1.6mm along with 125 x 125 x 4mm or 150 x 150 x 4mm pressed on it.

EASY INSTALLATION

The Split Set / Friction Bolt is a popular choice due to its easy installation. Once the hole is drilled, the driver tool drives the anchor into the wall. Installation time is typically less than a minute and there is no waiting time for grout to set, no tightening or torquing and no ongoing maintenance is needed after installation. This saves time, labour and additional grouting or resin expenses.

Custom specifications are available as per orders.



SPLIT SET FRICTION BOLT



MATERIAL SPECIFICATIONS

Mechanical Tests are performed by Independent NABL Approved laboratory conducted on our manufactured Split Set / Friction Bolts to confirm the product specification and to offer complete transparency to the client. Clients can rely upon the standard, consistency and quality of our split set units as supported by these ongoing tests.

PACKAGING

Split Sets / Friction Bolts are packed in rectangular shape with quality packaging fitted with metal straps designed to withstand the rigours of transport by road and sea. This ensures damage is eliminated or kept to an absolute minimum during transport.



SPLIT SET MATERIAL SPECIFICATION

Yield Strength (Min)	420 MPA
Tensile Strength (Min)	480 to 650 MPA
Elongation %	16

COMBI WASHERS & DOME PLATE

For Split Set / Friction Bolt

Black, Hot Dipped Galvanized & Zinc Electroplated Coating.

COMBI WASHER

DOG EAR DESIGN



INVERTED 'V' DESIGN

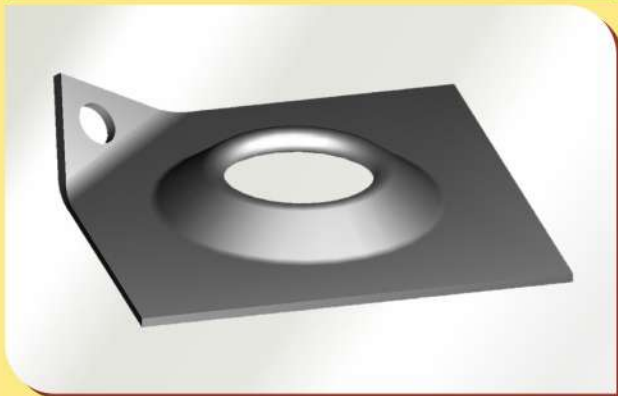


Size : 300 x 285 x 1.6mm

Fitted with 150 x 150 x 4mm or 125 x 125 x 4mm plate

DOMED BEARING PLATE

DOG EAR DESIGN



INVERTED 'V' DESIGN



Size : 150 x 150 x 4mm or 125 x 125 x 4mm plate

PIGTAILED EYE BOLT

Daman Pipe is a manufacturer and supplier of Pigtail Eye Bolts to the mining industry.

Description

Pigtail Eye Bolts are used mainly to suspend underground services such as pipes and conduits. Pigtail Eye Bolts are secured by means of a mechanical expansion shell. The suspension bolt product provides a mechanism to quickly and safely suspend services from the roof using an Expansion Shell for installation.



Advantages of the product

- Re-usable suspension bolts.
- Different lengths and diameters available.
- Quick manual installation.



Dimensional Specifications

Thread	Bar Diameter (mm)	Shank Length (mm)
M16	14.5	350
M16	14.5	380
M16	14.5	450
M16	14.5	500
M16	14.5	600
M16	14.5	800
M16	14.5	1000
M16	14.5	1200

Thread	Bar Diameter (mm)	Shank Length (mm)
M20	18	350
M20	18	380
M20	18	450
M20	18	500
M20	18	600
M20	18	800
M20	18	1000
M20	18	1200

The Pigtail eye is hot formed for better mechanical properties.

A cold-rolling process forms all threads.

The following standard thread types are available: Metric (right hand only)

M16 x 2 – 8g

M20 x 2.5 – 8g



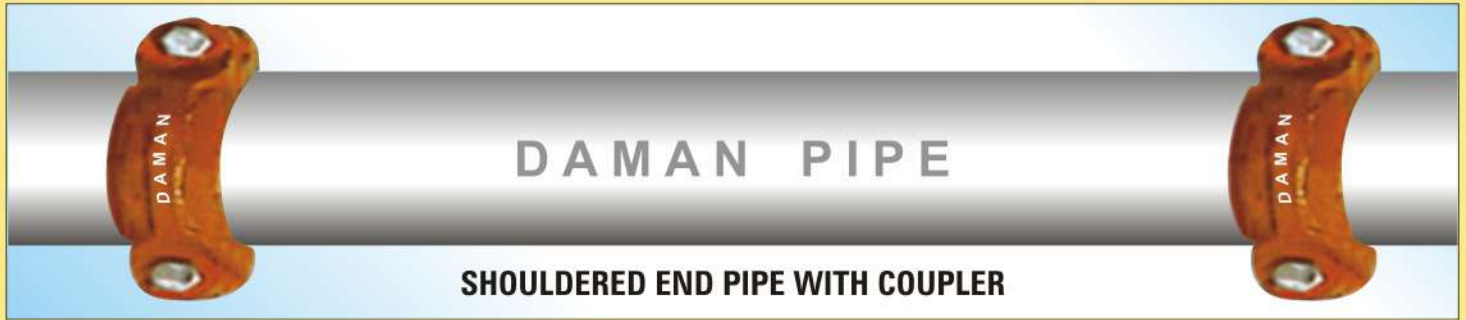
DAMAN PIPE

Works : Plot No. 41, Indl. Area, Phase 9, Mohali-160062, Punjab. INDIA.

Mobile : +91-78378-11191, Telefax : +91-172-5094744

e-mail : sales@damanpipe.com Website : www.damanpipe.com

SHOULDERED END / FLEXIBLE COUPLING ERW GI STEEL PIPE & PIPE FITTINGS



COUPLER



COUPLER SLEEVE



END CAP



BEND 45°



BEND 90°



EQUAL TEE



ADAPTER FLANGE



ADAPTER



REDUCING TEE



DAMAN PIPE

Works : Plot No. 41, Indl. Area, Phase 9, Mohali-160062, Punjab. INDIA.

Mobile : +91-78378-11191, Telefax : +91-172-5094744

e-mail : sales@damanpipe.com Website : www.damanpipe.com

ALVENIUS / KLAMBON ENDS STEEL PIPES

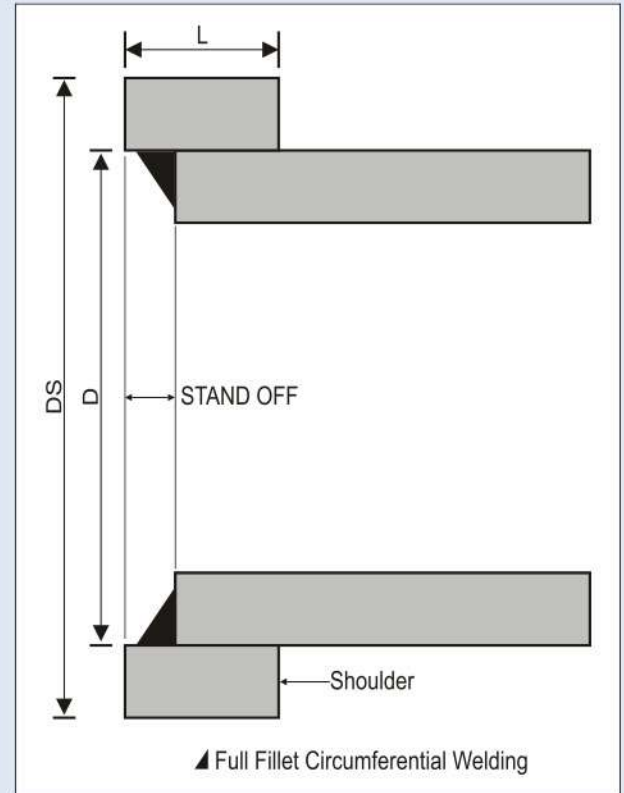
ALEVINUS / KLAMBON ENDS GALVANIZED STEEL PIPE

The Shouldered End Ring is welded in house as per international Standards. The Hydro testing of the Shouldered End Pipes is performed. The material of pipe conforms to relevant Standard.

Steel Shoulder Steel rings are welded with an interference fit with the outside of the pipe ends. The steel shoulder rings are fitted with Pipe ends which are within the tolerances as per Shoulder Dimensions, details as under. Shoulder rings are fitted with utmost care to ensure that ring distortion does not occur. Stand off i.e. the distance between the edge of the steel shoulder ring and the pipe end is accurately maintained.

PIPE & SHOULDER DIMENSION

PIPE DIMENSION (MM)		SHOULDER DIMENSION (MM)				
Outer Diameter	Nominal Diameter	D Diameter	DS Diameter	Tolerance		L Dimension
				Plus	Minus	
60.3	50	60.3	67	0.8	0.8	16
88.9	60	88.9	97	0.8	0.8	16
114.3	100	114.3	122	0.8	0.8	16
102	102	102	108	0.8	0.8	16
152	152	152	162	0.8	0.8	18
165.1	150	165.1	175	0.8	0.8	16
219.1	200	219.1	232	0.8	0.8	20.5
273.0	250	273.0	286	0.8	0.8	20.5
323.9	300	323.9	336.5	0.8	0.8	20.5
355.6	350	355.6	368.5	0.8	0.8	24.0
406.4	400	406.4	419	0.8	0.8	31.0
457.0	450	457.0	470	0.8	0.8	31.0

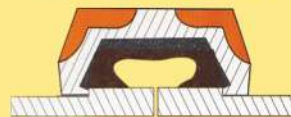


STAND OFF

- ✓ 5 mm for pipe 88.9 mm outside dia and below.
- ✓ 6.5 mm for pipe 114.3 mm outside dia upto and including 219.1 mm outside dia.
- ✓ 9.5 mm for pipe 273 mm outside dia.

Daman shouldered pipes & fittings are designed to bear extremes of expansion / contractions as well as Deflections

CONTRACTION



DEFLECTION



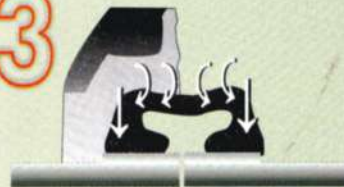
THE 4 WAY SEALING RING

1



Ring over the Pipe Collars puts the sealing lips in direct and automatic sealing tension.

3



Vacuum / Suction strengthens the seal - higher the outer pressure more the compression of the sealing ring.

2



Pipeline pressure automatically enhances the seal by internally acting on the sealing ring lips - higher the pressure - tighter the seal.

4



The Clamp holds the sealing ring firmly on pipe collars without compressing the sealing ring which enhances the life of sealing ring.

GATE VALVE WITH ALVENIUS / KLAMBON ENDS



FEATURES

- HEAVY DUTY cast ductile iron body, bonnet, gate and handwheel.
- Fusion Bonded Powder Coating on all interior and exterior surfaces.
- 16 Bar design pressure.
- EPDM Resilient Seat for bi directional drip tight shut off.
- Non-rising stem handwheel operated.
- Brass Stem bushing with EPDM stem seal and backseat provides reduced operating torque.
- Stainless Steel stem for corrosion resistance.
- Tested to 24 bar for body and bonnet hydrostatic test.
- Tested to 17.6 bar for gate integrity and seat leakage.

BUTTERFLY VALVE WITH ALVENIUS / KLAMBON ENDS PIPES

Technical Features

- Designed to meet SABS / International Standards.
- Simple to Install & Operate and Low maintenance cost.
- Size Range to Suite Pipe of OD 102, OD 152, NB 100 & NB 150.
- Corrosion and Abrasion Resistant.

Material Specifications

- Body : SG Iron, Powder Coated.
- Spindle : Stainless Steel Grade 316.



DAMAN PIPE

Works : Plot No. 41, Indl. Area, Phase 9, Mohali-160062, Punjab. INDIA.
Mobile : +91-78378-11191, Telefax : +91-172-5094744
e-mail : sales@damanpipe.com Website : www.damanpipe.com

GATE VALVE WITH ALVENIUS / KLAMBON ENDS

MATERIALS OF CONSTRUCTIONS

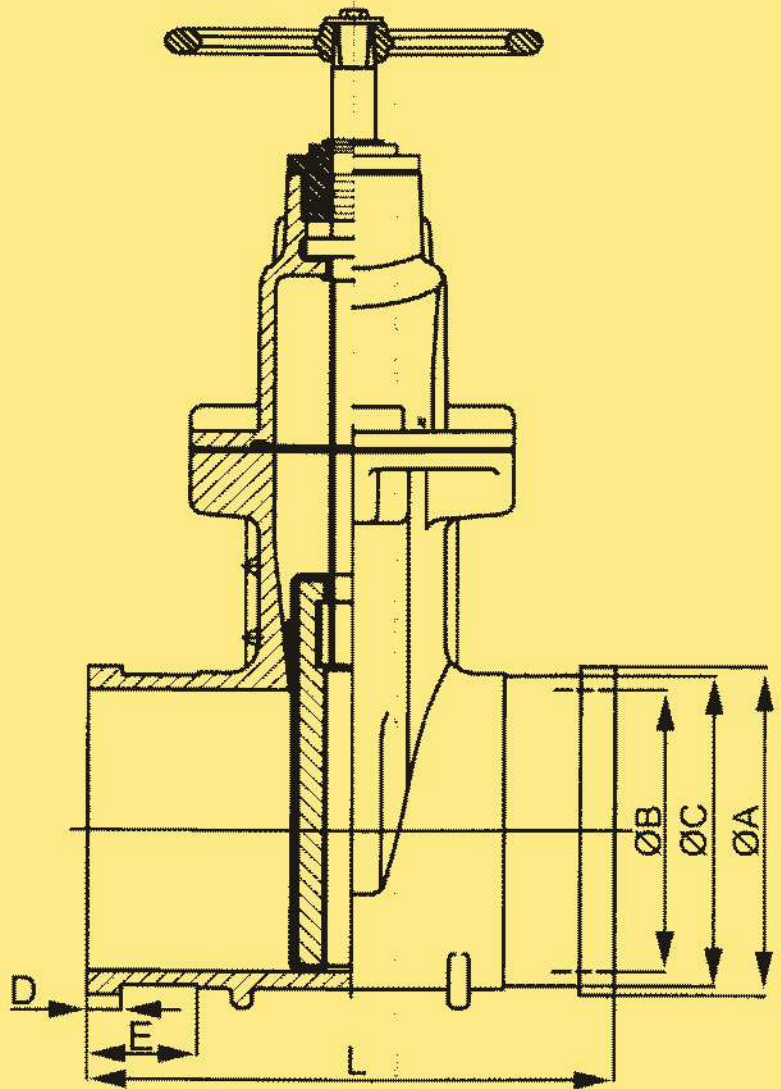
Sr.	Name	Material
1.	Body	Ductile Iron
2.	Gate**	Ductile Iron / EPDM
3.	Stem Nut	Brass
4.	Stem	Stainless Steel
5.	Bonnet	Ductile Iron
6.	Back Seat	EPDM
7.	Stem Seal	EPDM
8.	Gland	Brass
9.	Stem Seal	EPDM
10.	Handwheel	Ductile Iron

* Body bonnet and handwheel are ductile iron with a fusion bonded powder coating on all surfaces.

** Gate us ductile iron with an EPDM Liner on all surfaces.

Stainless Steel is 420/2cr 13.

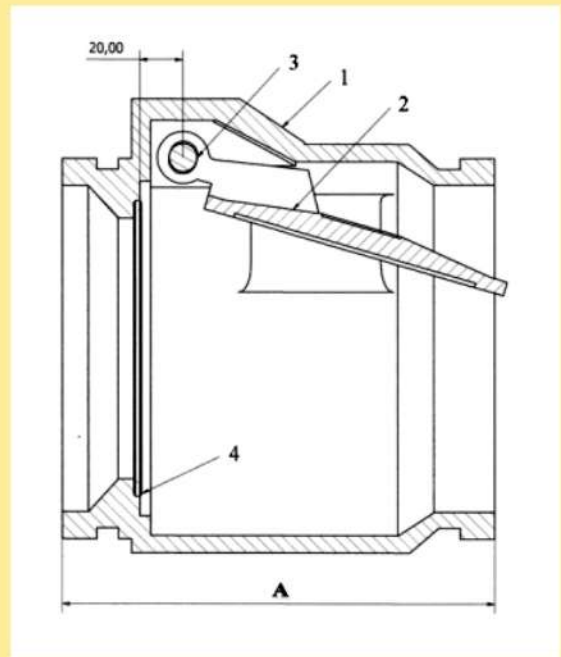
Ductile iron is ASTM A536GR 65-45-12.



DIMENSIONS (MM)

Size	48	102	152	88	114	165
A	52.0	108.0	162.0	97.0	122.2	175.0
B	35.0	86.0	133.0	80.0	100.0	150.0
C	48.3	102.0	152.4	88.9	114.3	165.1
D	12.5	16.0	18.0	16.0	16.0	16.0
E	19.0	24.5	28.0	35.0	42.0	56.0
L	110.0	142.0	200.0	203.0	229.0	267.0

NON RETURN CHECK VALVES WITH ALVENIUS / KLAMBON ENDS PIPES



1.	Body	SG Iron
2.	Door	Stainless Steel
3.	Pin	Stainless Steel
4.	Seal	EPDM

Technical Features

- Designed to meet SABS / International Standards.
- Simple to Install & Operate and low maintenance cost.
- Shoulder Conforms to SANS 815-1
- Corrosion and Abrasion Resistant



DAMAN PIPE

Works : Plot No. 41, Indl. Area, Phase 9, Mohali-160062, Punjab. INDIA.
Mobile : +91-78378-11191, Telefax : +91-172-5094744
e-mail : sales@damanpipe.com Website : www.damanpipe.com

INSTALLATION READY COUPLER FOR SHOULDERED END PIPE



The Installation ready coupler are designed to fit with pipe directly without requiring to open two half of coupling. It is ready to install design coupling.

Each coupling / clamp consists of two identical curved housing, gasket, nuts and bolts. The housing are manufactured from the Ductile Iron Casting, the Gasket is from Nitrile / Natural Rubber / EPDM and the Nuts and Bolts are made from steel as per 4.6 Grade. The head of the bolt is square necked to fit square shaped holes in the housing. The Coupler castings are Painted / Galvanized.

Dimensions		
Size (Inch)	Dia (mm)	Nominal Dia (mm)
1½"	48	48
2"	60.3	50
3"	88.9	80
4"	114.3	100
4"	102	102
6"	152	152
6"	165.1	150



DAMAN PIPE

Works : Plot No. 41, Indl. Area, Phase 9, Mohali-160062, Punjab. INDIA.
Mobile : +91-78378-11191, Telefax : +91-172-5094744
e-mail : sales@damanpipe.com Website : www.damanpipe.com

HOSE PIPE FITTINGS



Hose Clamps
with Lugs



Hose Clamps
without Lugs



Safety whip check Slings



Hose Mender



DAMAN PIPE

Works : Plot No. 41, Indl. Area, Phase 9, Mohali-160062, Punjab. INDIA.

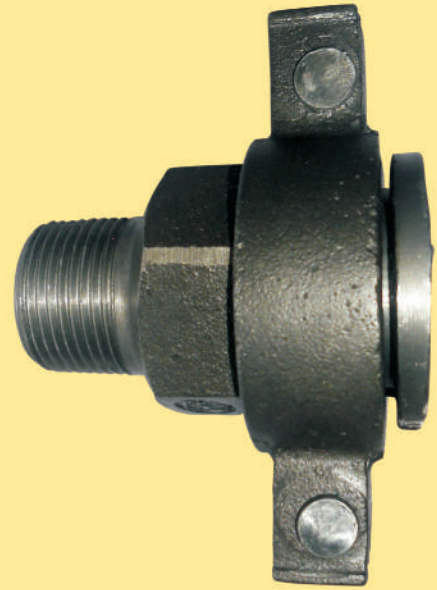
Mobile : +91-78378-11191, Telefax : +91-172-5094744

e-mail : sales@damanpipe.com Website : www.damanpipe.com

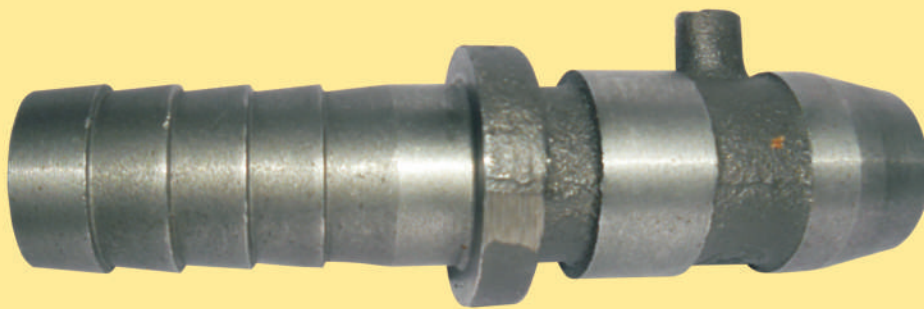
HOSE PIPE FITTINGS



Female Spud
Single Pin



Male Spud
Single Pin



Hose Tail Single Pin



DAMAN PIPE

Works : Plot No. 41, Indl. Area, Phase 9, Mohali-160062, Punjab. INDIA.

Mobile : +91-78378-11191, Telefax : +91-172-5094744

e-mail : sales@damanpipe.com Website : www.damanpipe.com